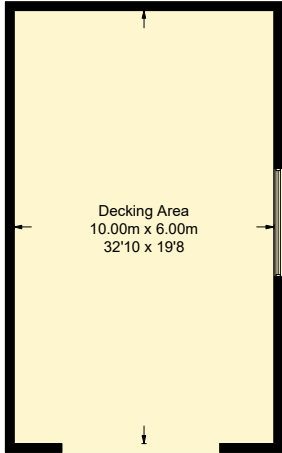
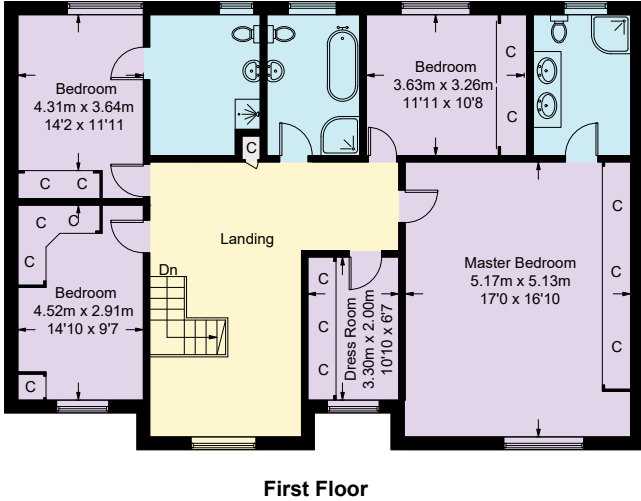


Dwynwen, Honeysuckle Lane, Upper Colwyn Bay, LL28 5YR

Approximate Gross Internal Area = 358.2 sq m / 3856 sq ft
Decking Area = 60 sq m / 646 sq ft
Total = 418.2 sq m / 4502 sq ft



(Not Shown In Actual Location / Orientation)

This plan is for layout guidance only. Not drawn to scale unless stated. Windows and door openings are approximate. Whilst every care is taken in the preparation of this plan, please check all dimensions, shapes and compass bearings before making any decisions reliant upon them.